

Prelude

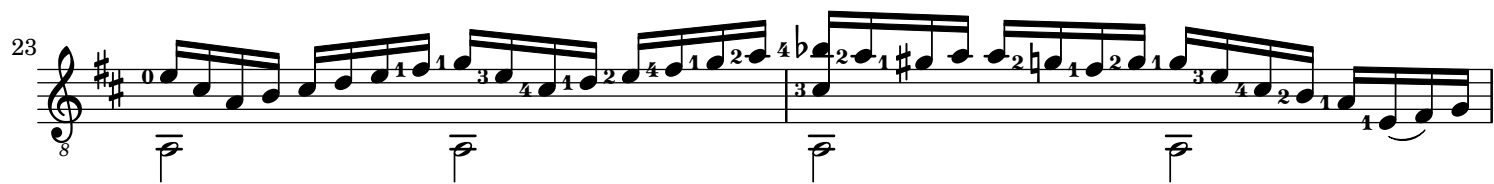
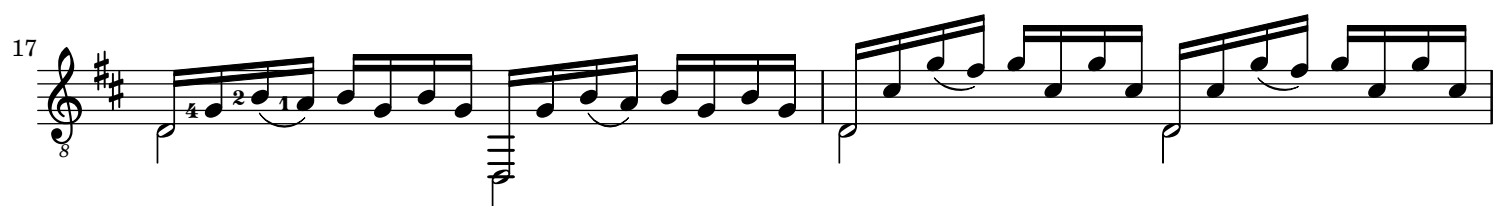
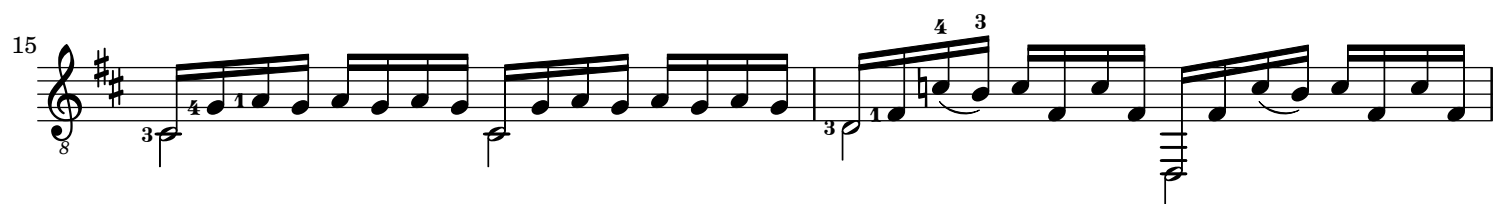
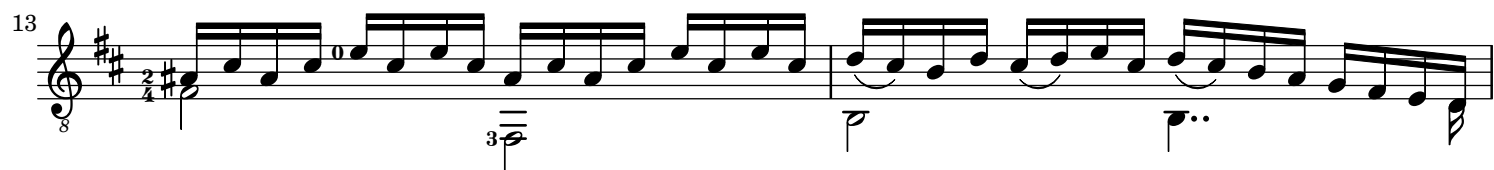
BWV-1007

J. S. Bach (1685-1750)

Steve Shorter (2015)

Guitar

1 2 3 4 5 6 7 8 9 10 11



27

29

31

33

35

37

40

Detailed description: This musical score is for guitar, spanning measures 27 to 40. It is written in treble clef with a key signature of two sharps (F# and C#). The time signature is 8/8. The score includes various guitar-specific notations such as fret numbers (0, 1, 2, 3, 4, 5), fingerings (1, 2, 3, 4), and articulation marks like slurs and accents. Measures 27-30 show a melodic line with slurs and fingerings. Measures 31-34 feature more complex patterns with slurs and fingerings. Measures 35-36 show a melodic line with slurs and fingerings. Measures 37-40 show a melodic line with slurs and fingerings. The score ends with a double bar line in measure 40.